



Summary Report

Preventive Medicine

Chairman: Prof. Lee-Yan SHEEN

August 25, 2016 (Thursday)

Panel Members

Chairman



Lee-Yan SHEEN
(National Taiwan University)

Co-chairman



Jianwen GUO
(Guangdong Provincial Hospital
of Traditional Chinese Medicine)

Co-chairman



Clara Bik-San LAU
(The Chinese University
of Hong Kong)

Panelist



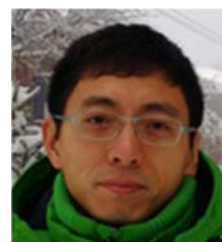
Jing-Jy CHENG
(National Research Institute
of Chinese Medicine)

Panelist



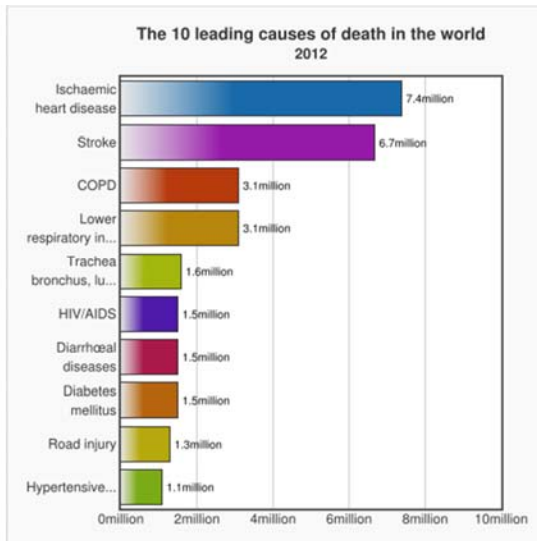
Bacon Fung Leung NG
(The Hong Kong Polytechnic
University)

Panelist



Wing LAM
(Yale University)

Why is Preventive Medicine important?



The burden of chronic diseases:

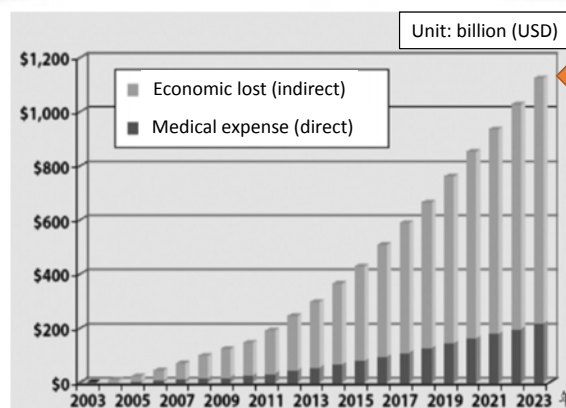
- has major adverse effects on the quality of life for individuals;
- causes premature death;
- creates large adverse – and underappreciated – economic effects on families, communities and societies in general



(WHO, 2005; 2012)

60% of all deaths are due to chronic diseases 3

Preventing CHRONIC DISEASES a vital investment



Saving 1.13 trillion USD

Estimation of saving cost by preventive medicine in US
(Milken Institute, 2007; Burrill & Company, 2009)

What works?

Comprehensive and integrated
action is the means for
preventive medicine



Preventing
CHRONIC DISEASES
a vital investment

5

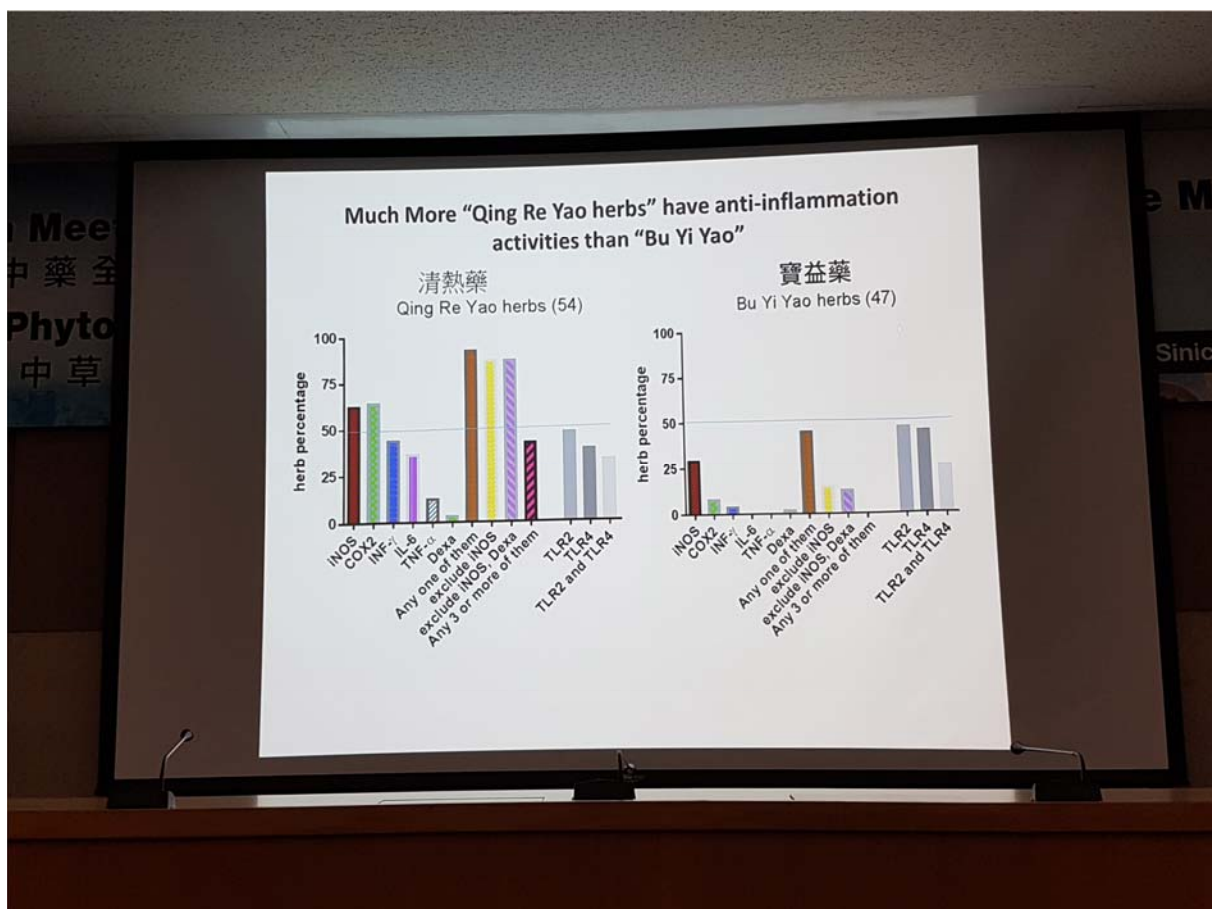
Agenda

09:30~09:35	Opening: Introduction to the Chairman, Co-chairmen and Panelists		Moderator: Lee-Yan SHEEN
09:35~09:50	Oral presentation: Part 1	Majority of Chinese Herb "Qing Re Yao" possess Anti-inflammatory Activity (No. 342, Corresponding Author: YungChi CHENG; Presenter: Wing LAM)	
09:50~10:05		PHY906(KD018), an Adjuvant Based on a 1800-year-old Chinese Medicine, Enhanced the Anti-tumor Activity of Anti-PD-L1 on Melanoma (No. 343, Corresponding Author: YungChi CHENG; Presenter: Wing LAM)	
10:05~10:20		A Prospective Study to Evaluate the Safety and Efficacy Treated with Chinese Insects and Herbal Medicine "C117 formula" for Patients with Vulnerable Plaques of Carotid Artery (No. 346, Corresponding Author/Presenter: Jianwen GUO)	
10:20~10:35	Oral presentation: Part 2	Anti-prostate Cancer Activity from Chinese Herbal Medicine (No. 341, Corresponding Author: YungChi CHENG, Presenter: Wing LAM)	Moderator: Jianwen GUO
10:35~10:50		Evaluation of the Anti-angiogenic Activities of <i>Hedyotis diffusa</i> Water Extract and Its Active Component (No. 347, Corresponding Author: Clara Bik-San LAU; Presenter: Grace YUE)	
10:50~11:05		The Use of Health Qigong Liuzijue in Preventive Medicine for Hypertension and Diabetes (No. 348, Corresponding Author/Presenter: Bacon Fung Leung NG)	
11:05~11:20	Oral presentation: Part 3	Plant Galactolipid dLGG Suppresses Lung Metastasis of Melanoma through Modulating Epithelial-Mesenchymal Transition, Extravasation, and Oxylinpins Dynamics (No. 353, Corresponding Author: Lie-Fen SHYUR, Presenter: Chung-Chih YANG)	Moderator: Clara Bik-San LAU
11:20~11:35		Evaluation of Health Preservative Components Targeting ATF-3 from Chinese Upper Herbs (No. 354, Corresponding Author/Presenter: Jing-Jy CHENG)	
11:35~11:50		Immediate Changes of Meridian Energy and Personal Feelings after Ginger Tea and Coconut Water Consumption by Young Subjects with Hot Constitution (No. 355, Corresponding Author: Lee-Yan SHEEN; Presenter: Kuan-Hung LU)	
11:50~12:00	Final discussion and conclusions		Moderator: Lee-Yan SHEEN

6

Several important new findings

7



Background

- some Chinese Herbal medicine can treat the VP, as a conclusion, prevention the incidence of ischemic stroke
- animal drugs have more bioactivity to treat the cerebral vascular disease.(CVD)
- Dr. Zhu Liangchun had been good at using the animal drugs to treat the CVD.

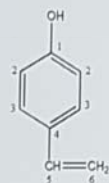


Conclusions

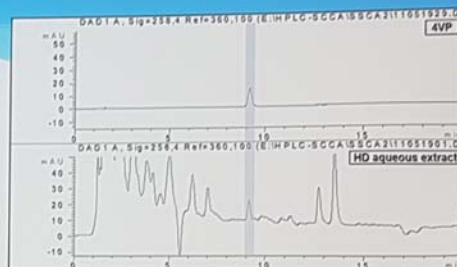
Our study demonstrated for the **first time**:

- 4-vinylphenol (4-VP) significantly inhibited tube formation and motility of endothelial cells via PI3K/AKT pathways
- 4-VP significantly inhibited blood vessel formation in zebrafish and tumor-bearing mice
- Our findings could further provide evidences and validate the potential use of *Hedyotis diffusa* as an anti-cancer herbal medicine





4-vinylphenol (4-VP)



- ☐ Isolated from the dried root of *Vetiveria zizanioides* (Poaceae) and *Asplenium trichomanes* (Aspleniaceae)
- ☐ As the metabolite of *p*-coumaric and ferulic acid by lactic acid bacteria in wine
- ☐ Firstly isolated from the water extract of *Hedyotis diffusa* in our laboratory



Community Training Diagram

健身氣功
六字訣掛圖
Figures of the
Liu Zi Jue movements

健身氣功 六字訣

Health Qigong Liu Zi Jue

(第五式至收勢)
(Routine 5 to Closing form)

Routine 5 Chui Exercise
吹氣式 吹字訣 (41-51)

Repeat
Fig. 35-39
吹氣
圖35-39

Routine 6 Xi Exercise
吸氣式 吸字訣 (52-59)

Repeat
Fig. 44-49
吸氣
圖44-49

Closing Form
收勢 (60-63)

Repeat
Fig. 53-59
收勢
圖53-59

Results

- ↓ Mean BP (2.48/2.08 mmHg) Rx group (NS)
- ↓ HbA1c (0.2%, $F(1, 46) = 6.556, p = .014$),
- ↓ Total cholesterol (0.32 mmol/L, $F(1, 46) = 4.921, p = .032$)
- ↓ % of body fat (.72%, $F(1, 46) = 6.286, p = .016$)
- ↓ Triglyceride ($F(1, 46) = 3.529, p = .067$)
 - Sub-gp baseline and F/U analysis (.69 mmol/L, $t(24) = 4.530, p = .000$)
- ↓ BMI ($F(1, 46) = 1.064, p = .308$)
 - Sub-gp baseline and F/U analysis (.35%, $t(24) = 2.227, p = .036$)
- ↑ Overall QOL Score (.84 vs. -.08, $F(1.656, 45) = 4.138, p = .026$)

第15屆中藥全球化聯盟會議
CGCM MEETING 2016
15th Meeting of the Consortium for
Globalization of Chinese Medicine
Academia Sinica, Taipei
August 22-26



Plant Galactolipid dLGG Suppresses Lung Metastasis of Melanoma through Modulating Epithelia-Mesenchymal Transition, Extravasation, and Oxylipins Dynamics



Chung-Chih Yang (楊仲智)



¹Ph.D. Program for Cancer Biology and Drug Discovery, College of Medical Science and Technology, Taipei Medical University and Academia Sinica

²Agricultural Biotechnology Research Center, Academia Sinica, Taipei, Taiwan

2016/08/25

Crassocephalum rabens (Asteraceae)

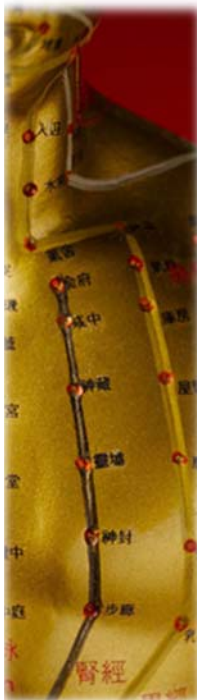
Chinese Name	昭和草
Kindom	Plantae 植物界
Phylum	Magnoliophyta 被子植物門
Class	Dicotyledon 雙子葉植物
Order	Asterales 菊目
Family	Asteraceae 菊科
Genus	Crassocephalum 昭和草屬
Species	Crassocephalum crepidioides(or rabens) (Benth.) S. Moore



➤ Folk medicine:

Cold sore throat, sore throat, hepatitis, gastroenteritis, dysentery, mumps, stomatitis, mastitis, beriberi, edema, indigestion, ulcer treatment drug, diabetes.

7



Conclusions

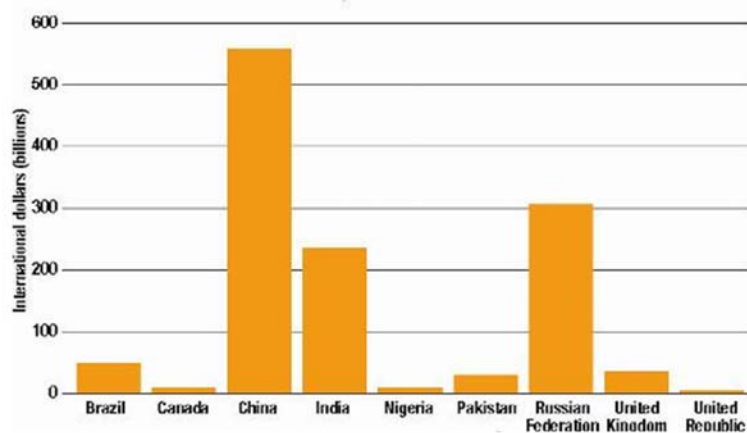
- The meridian energy and personal feelings of subjects with **hot constitution** are **more sensitive** than other constitutions after drinking foods with different natures.
- Cool/cold and warm/hot foods may exert **different effects on meridian energy** of hot-constitution subjects.
- Cool/cold foods may be **more suitable** for hot-constitution subjects.





Projected foregone national income

due to heart disease, stroke and diabetes
in selected countries, 2005–2015



(WHO, 2005)

\$558 billion

The estimated amount China will forego in national income over the next 10 years as a result of premature deaths caused by heart disease, stroke and diabetes

Conclusion

- dLGG reveals inhibitory effects on melanoma cell migration, invasion, and metastasis *in vitro* and *in vivo*.
- dLGG reduces vascular endothelia tight junction permeability that might lead to suppress melanoma extravasation into lung tissue via inhibition of TNF- α by 17-HDHA.