



中药全球化联盟

CONSORTIUM FOR GLOBALIZATION OF CHINESE MEDICINE



**Date: August 19, 2017**

**Time: 16:15-18:45**

**Venue: Jiangmen Hall, 3<sup>rd</sup> Floor, Block 2**

**Session: Clinical Investigation I (Cancer,  
Liver Disease and Inflammation)**

Chairman: Jeffrey D. White (NCI)

Co-chairman: Yun Yen (TMU)



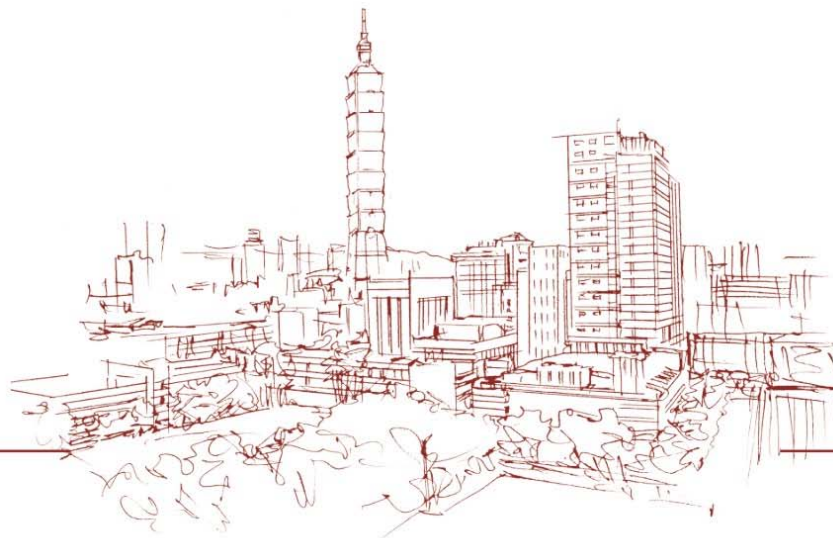
中药全球化联盟

CONSORTIUM FOR GLOBALIZATION OF CHINESE MEDICINE



## Clinical Investigation I (Cancer, Liver Disease and Inflammation)

- Chairman: Jeffrey D. White (NCI)
- Co-chairman:
  - **Yun Yen**, Taipei Medical University
  - **Kequn Chai**, Tongde Hospital of Zhejiang Province
- Panelists:
  - **Jian-Ping Chen**, The University of Hong Kong
  - **Shwu-Huey Liu**, President of PhytoCeutica Inc



Novel theranostic biomarker probes:  
Can we predict and monitor the treatment of cancer?

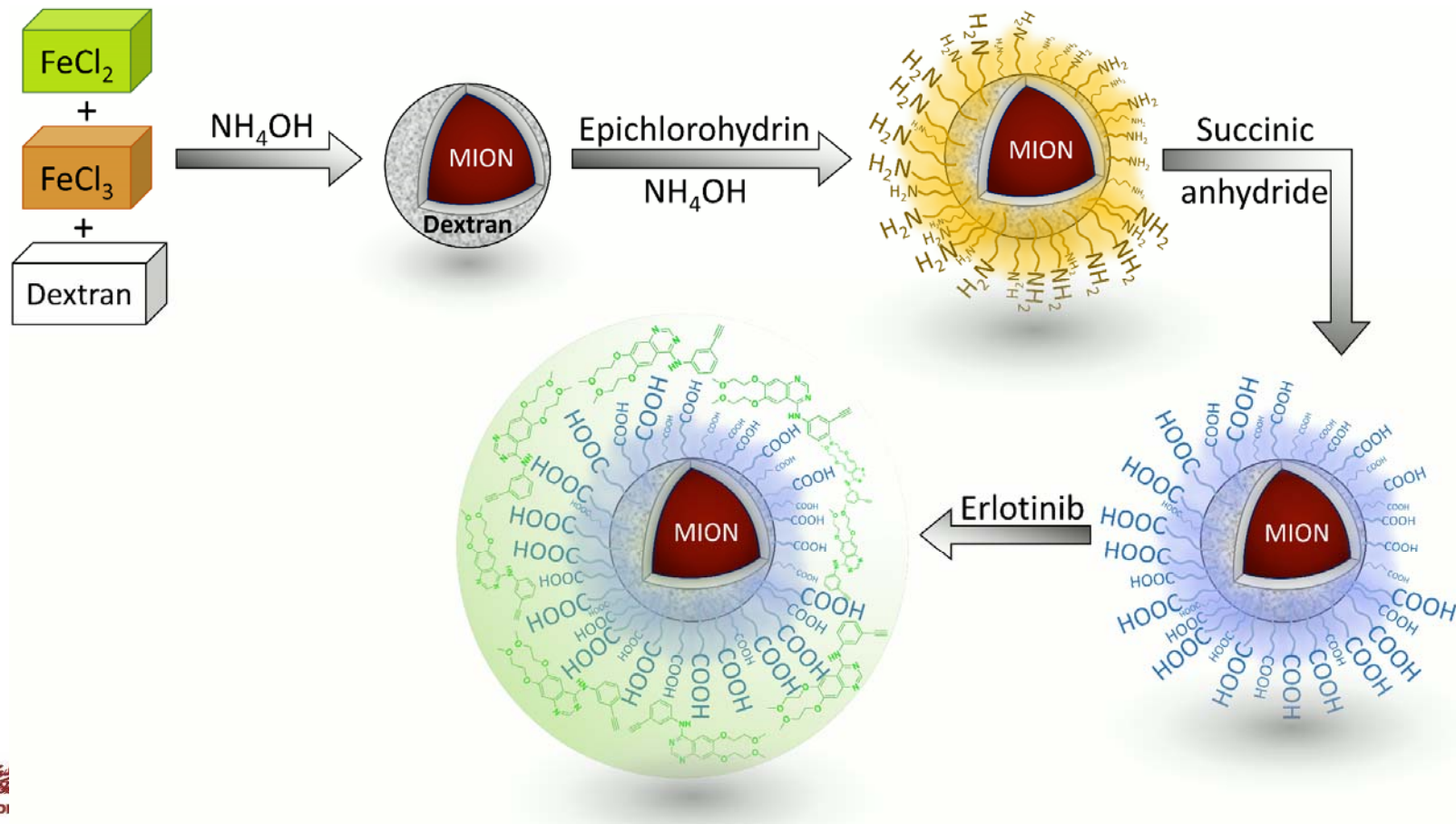
Prof. Dr. Hsu-Shan Huang

---



臺北醫學大學  
TAIPEI MEDICAL UNIVERSITY

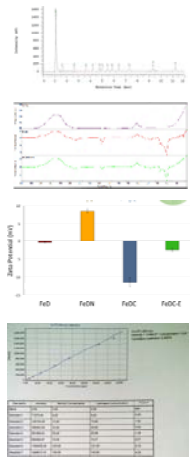
# Design and synthesis of the erlotinib-loaded NPs



# Conclusions



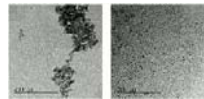
Chemical & Physical characterization



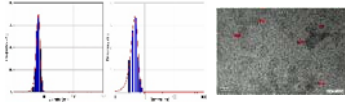
Physical Stability



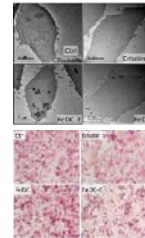
Regular & dispersed



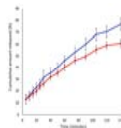
Ultra-small, Monocrystalline & Superparamagnetic



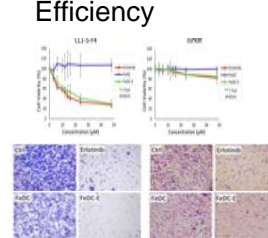
Targeting Capabilities & Enhanced Cellular Uptake



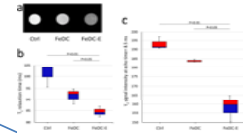
Smart Release of Drug



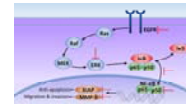
Targetable Therapeutic Efficiency



Higher MRI Contrast



Inhibit Carcinogenic Pathways





中药全球化联盟

CONSORTIUM FOR GLOBALIZATION OF CHINESE MEDICINE

Identification of predictive metabolites for the time to tumor progression of phase II trial of Irinotecan plus PHY906 (YIV906) in patient with metastatic colorectal cancer

Jiehuan Sun, **Wing Lam**, Shwu-Huey Liu, Guoxiang Xie, Wei Jia, Howard S Hochster, Edward Chu, Hongyu Zhao, YungChi Cheng



## Summary for phase IIB clinical of PHY906+/- CPT-11 for patient with metastasis colorectal cancer

- Patients of CPT11/PHY906 group appears to have longer time to progression than CPT11 alone group
- When metabolites data and cytokine/chemokines from patient plasma was analyzed by using L1 penalized Cox regression model, the dichotomized score derived from these metabolites and cytokine can separate the patients well into non-responders and responders to CPT11, regardless of PHY906.
- PHY906 appears to improve quality of patient receiving CPT11.



中药全球化联盟

CONSORTIUM FOR GLOBALIZATION OF CHINESE MEDICINE



*Thank you for your  
attention !*

*See you in Malaysia*